

Green Building Council Denmark

DGNB certification system



GREEN
BUILDING
COUNCIL
DENMARK™

Gør Danmark bæredygtigere



Green Building Council Denmark (DK-GBC)

- Founded in 2010, non-profit organization
- 290 members from the Danish construction and real estate industry
- Organization with 6 employees and 1 student assistant
- The vision is to promote sustainability
- We provide DGNB certification system to evaluate sustainability performance of city districts and buildings



*JJW Værkstedet
DGNB Gold*



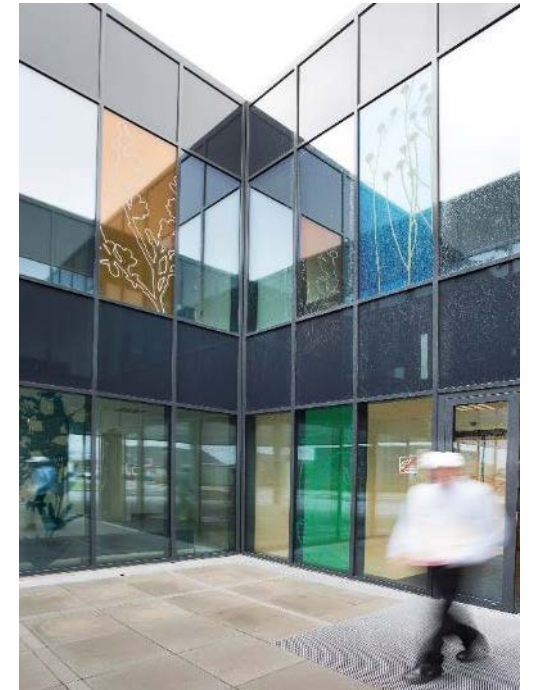
GREEN
BUILDING
COUNCIL
DENMARK

Gør Danmark bæredygtigere



DGNB sustainable certification schemes

- New buildings and retrofit projects
 - City districts
 - Office buildings
 - Residential buildings
 - Hospital buildings
 - Educational buildings
 - DGNB FLEX
- Buildings in use
 - Office buildings



*Hurup Sundhedshus
DGNB Gold*

DGNB Certifications Denmark

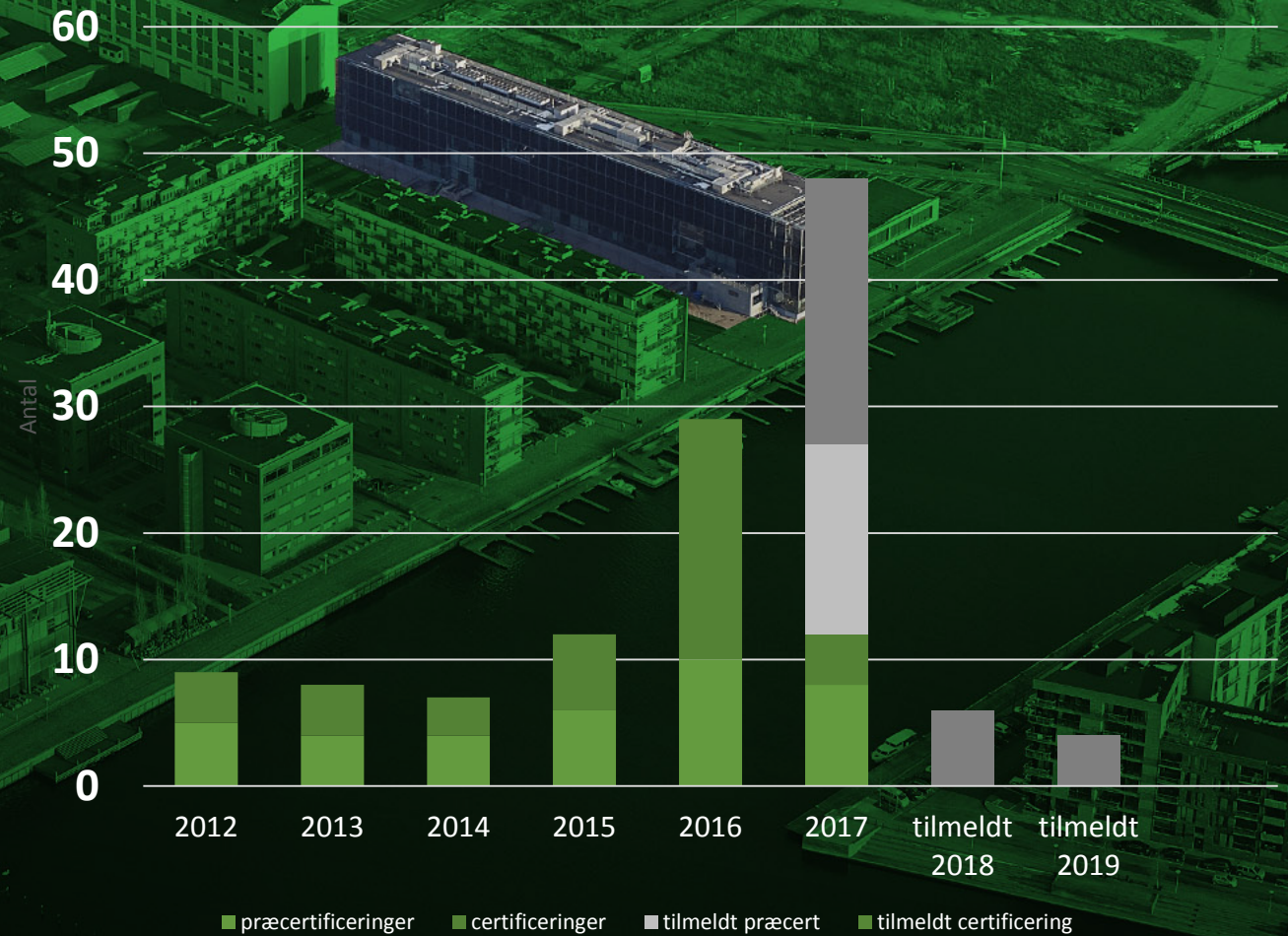
31 certified Buildings

22 office buildings

6 residential buildings

3 schools and day-care buildings

Another 40 buildings registered for certification





Type:

- Alle
- Etageejendomme og rækkehuse
- Nye kontorbygninger
- Bygninger i drift
- Hospitaler
- Undervisnings- og børneinstitutioner
- Byområder
- Konference og hotel

Certifikation:

- Certificeret
- Midtvejscertificeret
- Præcertificeret



Social- og sundhedsskolen Skive Thisted Viborg



Turbinehuset



North Camp, Kousgaards Plads



Orbicon - Nyt domicil



Fasanvengen



Hurup Sundhedshus



Sæby Sundhedshus



Brønderslev Sundhedshus



KHV7



GAPS Psykiatrisygehus



Rambøll Domicil



Administrationscenter Skanderborg



Humlebien



EAAA, Erhvervsakademiet Århus



Skagen Redningsstation



Green Solution House



Alfa Laval



Ernst & Young Domicil



Green Lighthouse



Company House Aarhus



Pakhuset, Langelinie Allé



Kamelen, Nordhavn



Buddinge Port - MOE Domicil



Sundhedshus Pandrup



Publikationer

På denne side finder du alle miniguider og brochurer, som DK-GBC har udgivet.

Alle kan downloades i pdf-version eller bestilles i hardcopy her fra hjemmesiden.

Siden december 2014 har DGNB-manualen for nye kontorbygninger desuden været offentligt tilgængelig her på hjemmesiden og kan bestilles i pdf-format gratis såvel som købes i hardcopy. Det samme gør sig nu gældende for DGNB-manualen for etageejendomme og rækkehuse.

Ved bestilling af hard-copy materiale kan man forvente leveringstid på op til 2 uger.



DGNB-manual for nye kontorbygninger 2016

Bestil vores manual til kontorbygninger.



DGNB-manual for Etageejendomme og rækkehuse 2016

Bestil vores manual til etageejendomme og rækkehuse.



Guide til DGNB for bygninger

Guide til DGNB giver en overordnet indføring i bæredygtighedsforstå...



Guide til DGNB for byområder

Guiden til byområder er en 50 sider lang brochure, som giver et ove...



Skab ny værdi i byggeriet

Læs eller bestil brochuren her.



Sådan kommer du i gang med DGNB

Brochuren er udarbejdet af SmartCityDK og giver et overblik o...



Markedsundersøgelse af bygherre 2016

Bæredygtigt byggeri vinder indpas.



An introduction to DGNB

An introduction to DGNB



Markedsundersøgelse af lejer 2016

Undersøgelsen viser virksomhedernes opfattelse af bæredygtighed og ...



DGNB introbrochure 2016

Denne brochure er en introduktionsbrochure til værdiskabelsen i DGN...




Materialebrochure

Bestil vores materialebrochure.

OPEN SOURCE

Del siden



An aerial photograph of a city waterfront, likely Copenhagen, showing a long pier with several buildings. One building, a red brick structure, is highlighted with a red glow. The background shows a large body of water, a bridge, and industrial buildings. The text 'Short introduction to DGNB certification system' is overlaid in white.

Short introduction to DGNB certification system



GREEN
BUILDING
COUNCIL
DENMARK™

Gør Danmark bæredygtigere



Sustainability?



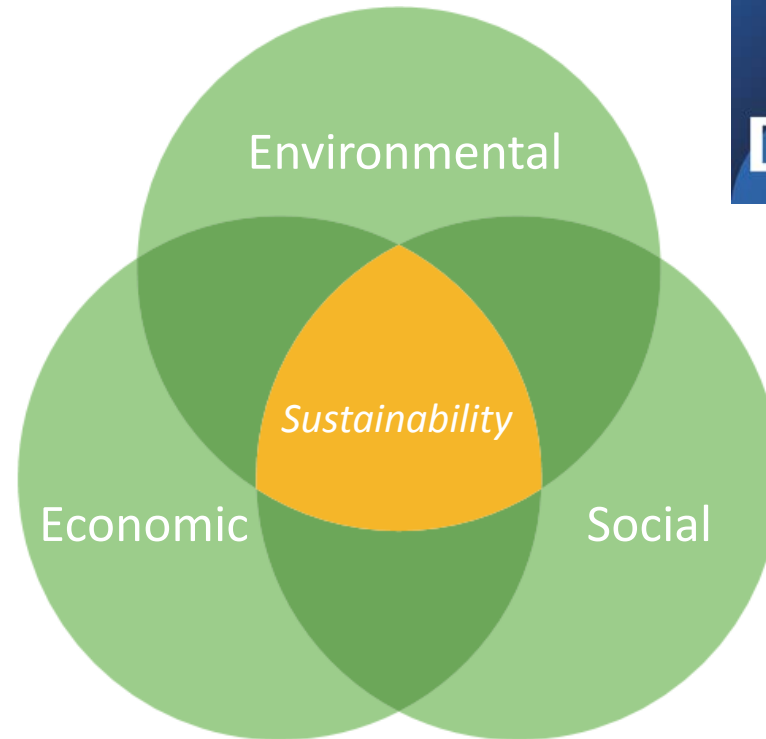
DGNB is adapted to Danish conditions

- DGNB is lifecycle-oriented
- Holistic evaluation of environmental, economic, and social aspects
- DGNB is based on European standards
- DGNB was launched in Germany in 2008, launched in Denmark in 2010
- DGNB is adapted to Danish conditions



*Existing building
Not certified*

Sustainability definition



*Holistic
sustainability*



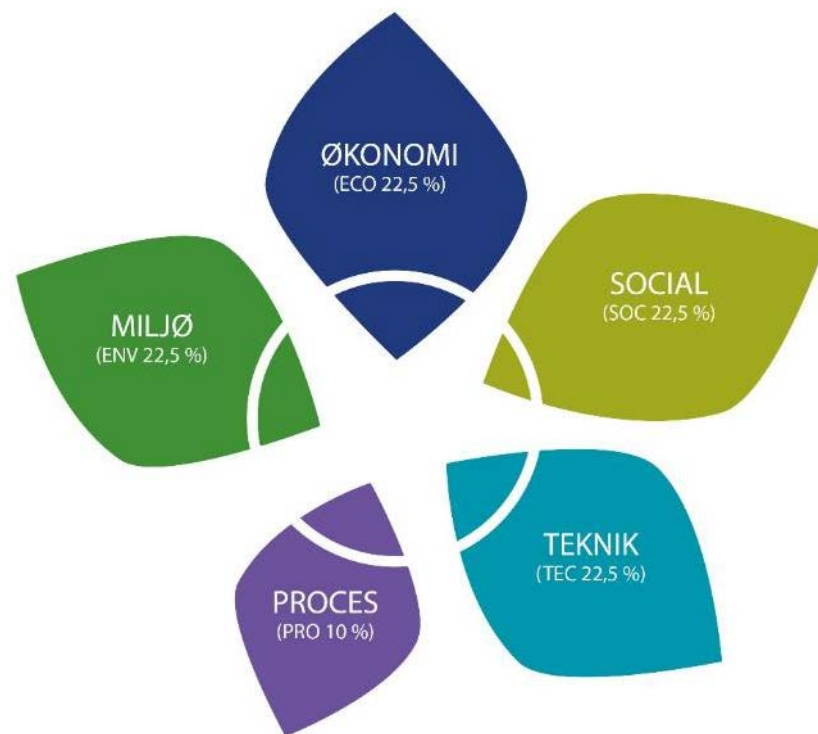
GREEN
BUILDING
COUNCIL
DENMARK

Gør Danmark bæredygtigere



DGNB

The five DGNB qualities



*The five
DGNB qualities*

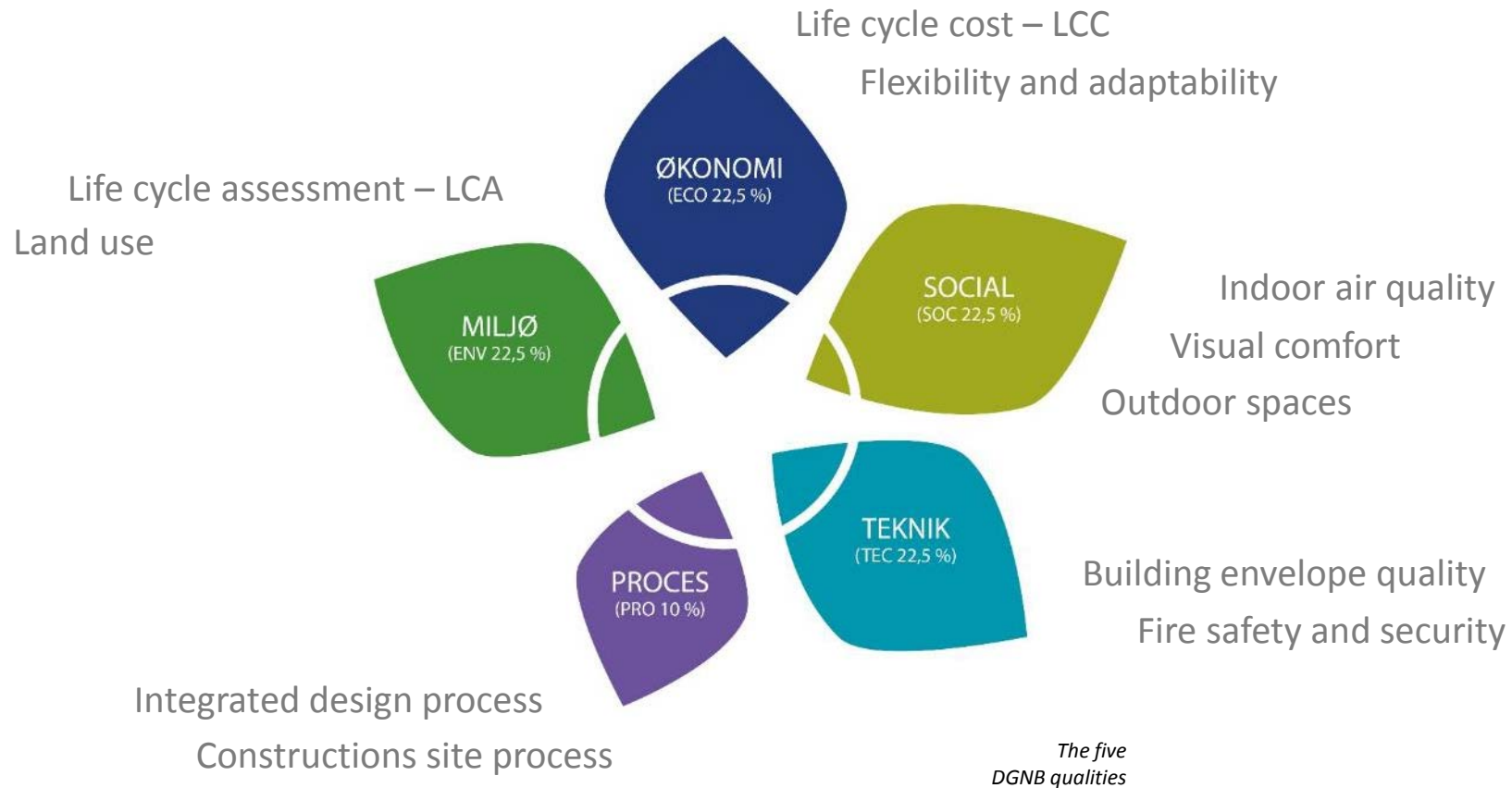


GREEN
BUILDING
COUNCIL
DENMARK

Gør Danmark bæredygtigere



The five DGNB qualities



GREEN
BUILDING
COUNCIL
DENMARK

Gør Danmark bæredygtigere

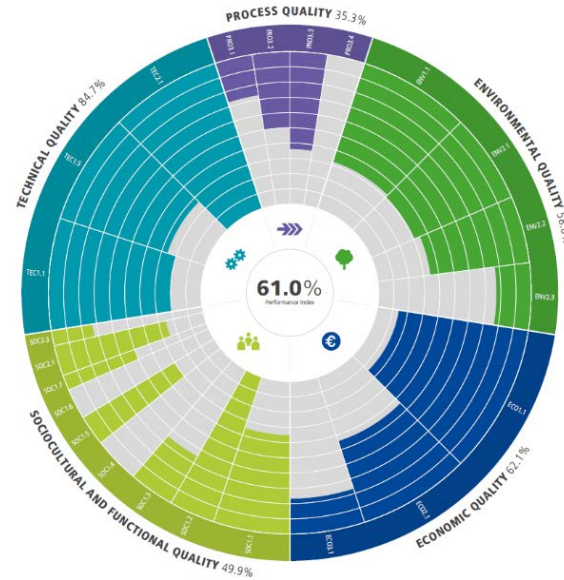


DGNB scores



DGNB weights and scores

Communication of results



DGNB plaque and flower chart

LCA calculations rules

- In accordance with EN-15978
- Include modul D
 - Potential for reuse, recycle
- 50 years reference study period
- Electricity and district heating:
 - National energy mix
- Fixed estimated service life

Modul	A1-A3			A4-A5		B1-B7							C1-C4			D	
Lifecycle stages	Product Stage Construction			Process Stage		Use Stage							End-of-Life Next			Next product system	
Processor	Raw material supply	Transport	Manufacturing	Transport to building site	Installation into building	Use /application	Maintenance	Repair	Replacement	Refurbishment	Operational energy use	Operational water use	Deconstruction /demolition	Transport to EoL	Waste processing	Disposal	Reuse, recovery or recycling potential
	A1	A2	A3	A4	A5	B1	B2	B3	B4	B5	B6	B7	C1	C2	C3	C4	D

LCA calculation evaluation

Environmental impacts

- Global Warming Potential (GWP)
- Ozone Depletion Potential (ODP)
- Photochemical Ozone Creation Potential (POCP)
- Acidification Potential (AP)
- Eutrophication potential (EP)

- Primary Energy non-renewable
- Primary energy Total

Data quality

- Mostly generic EPDs
 - Esuco database
 - Ökobau.dat
 - EPD after EN 15804

- Reference values for all indicators

LCA - results

Residential, 2 floors

Standard concrete loadbearing structures

Residential 2 floors

Wood construction, TLC



GREEN
BUILDING
COUNCIL
DENMARK™

Gør Danmark bæredygtigere



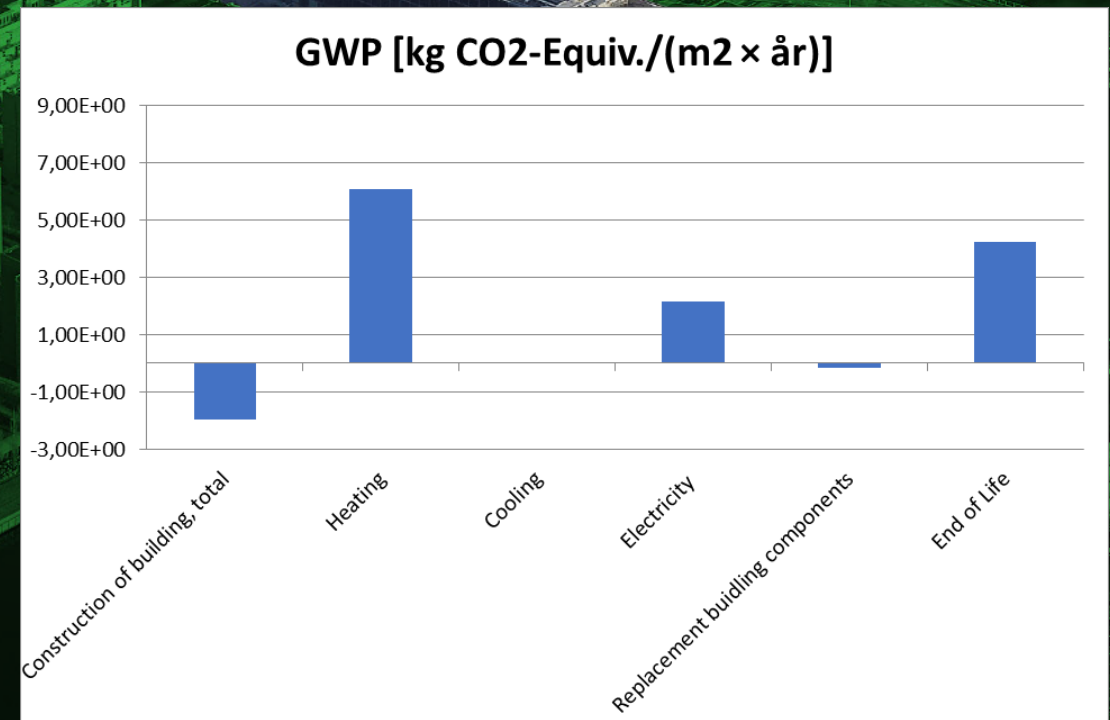
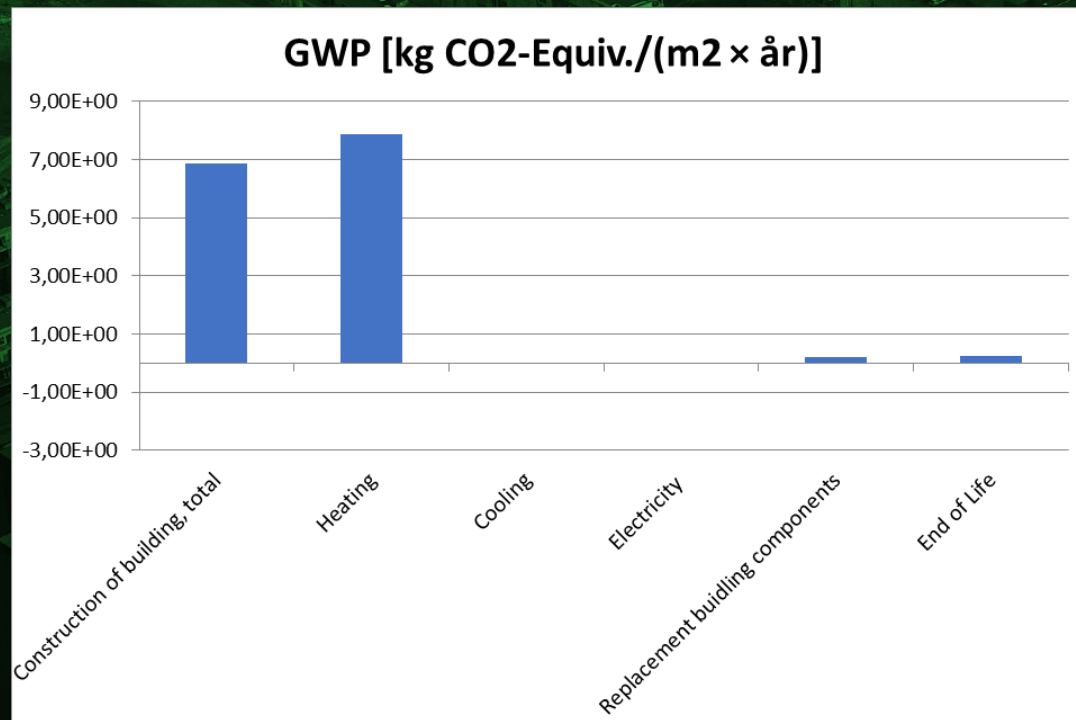
LCA - results

Residential, 2 floors

Standard concrete loadbearing structures

Residential 2 floors

Wood construction, TLC



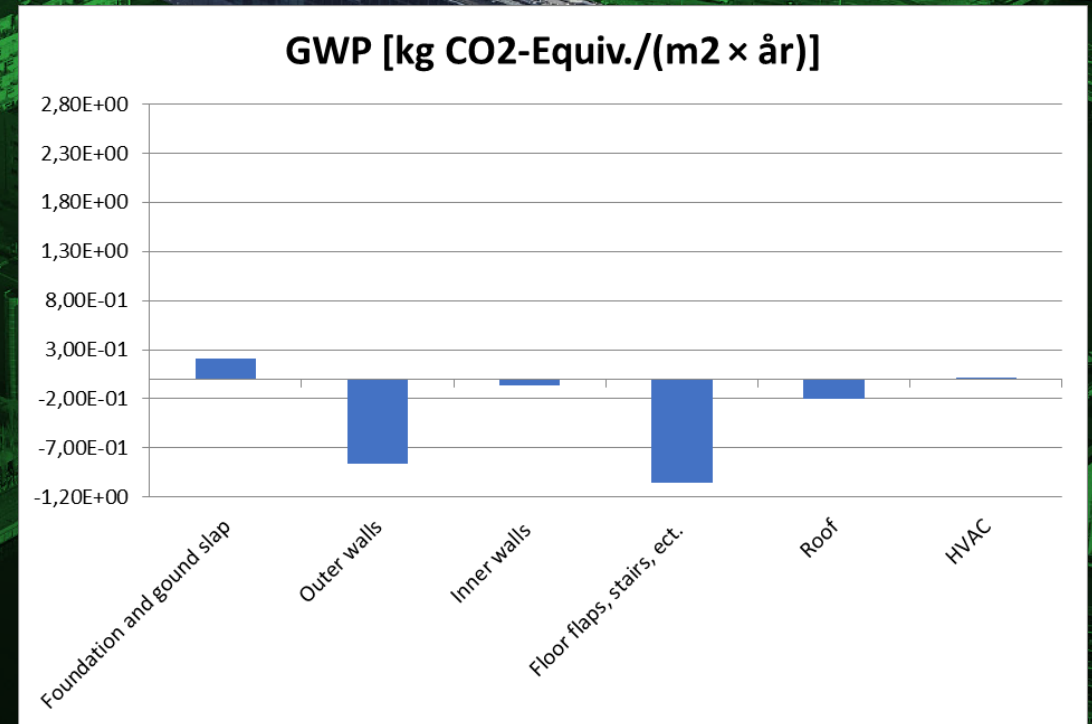
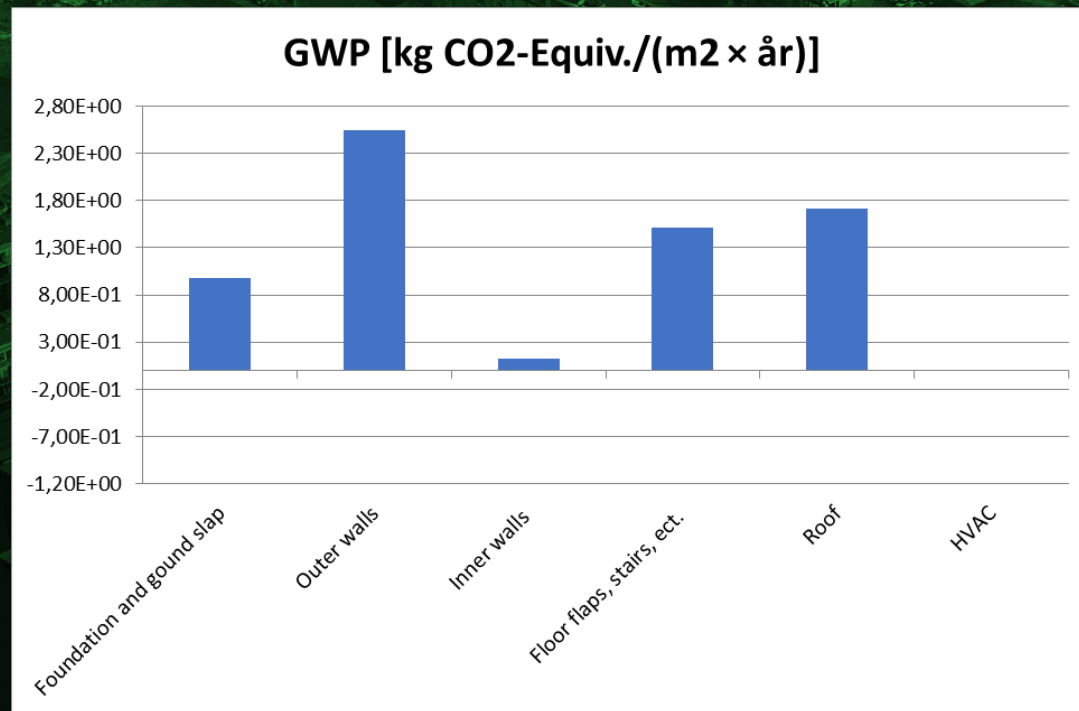
LCA - results

Residential, 2 floors

Standard concrete loadbearing structures

Residential 2 floors

Wood construction, TLC



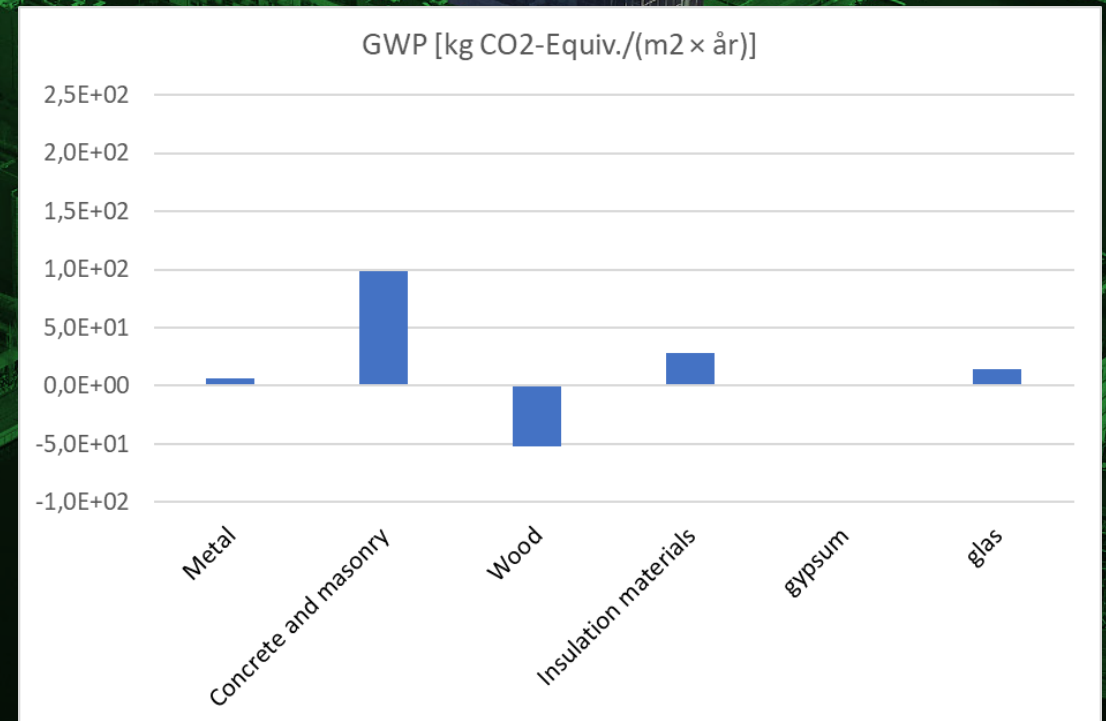
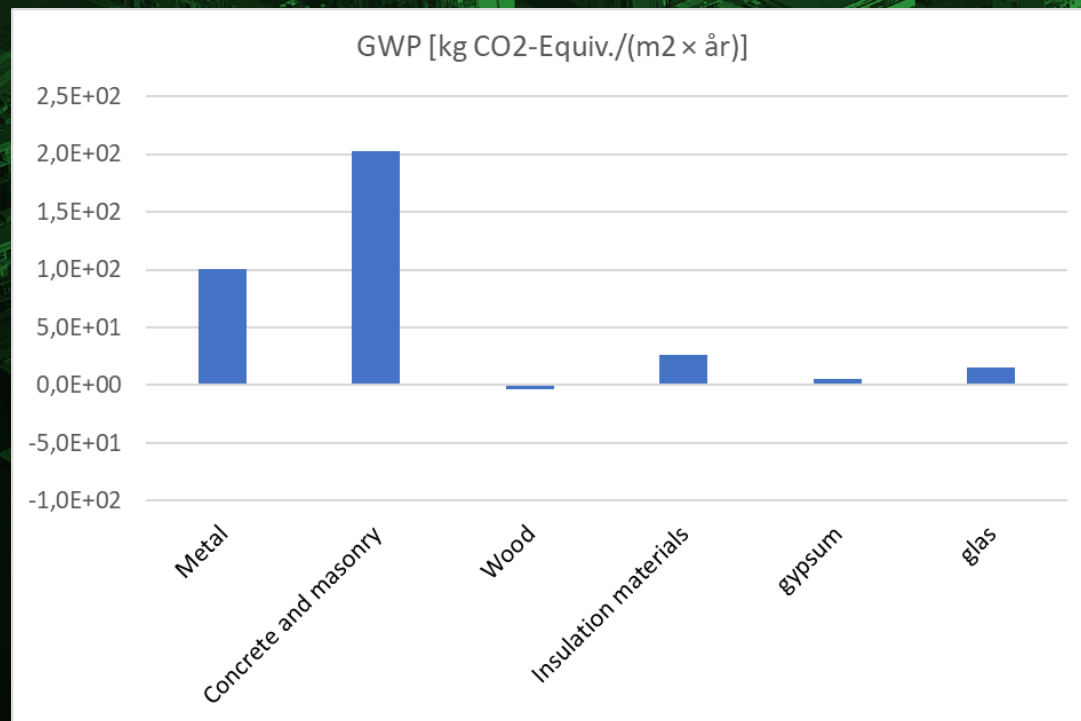
LCA - results

Residential, 2 floors

Standard concrete loadbearing structures

Residential 2 floors

Wood construction, TLC



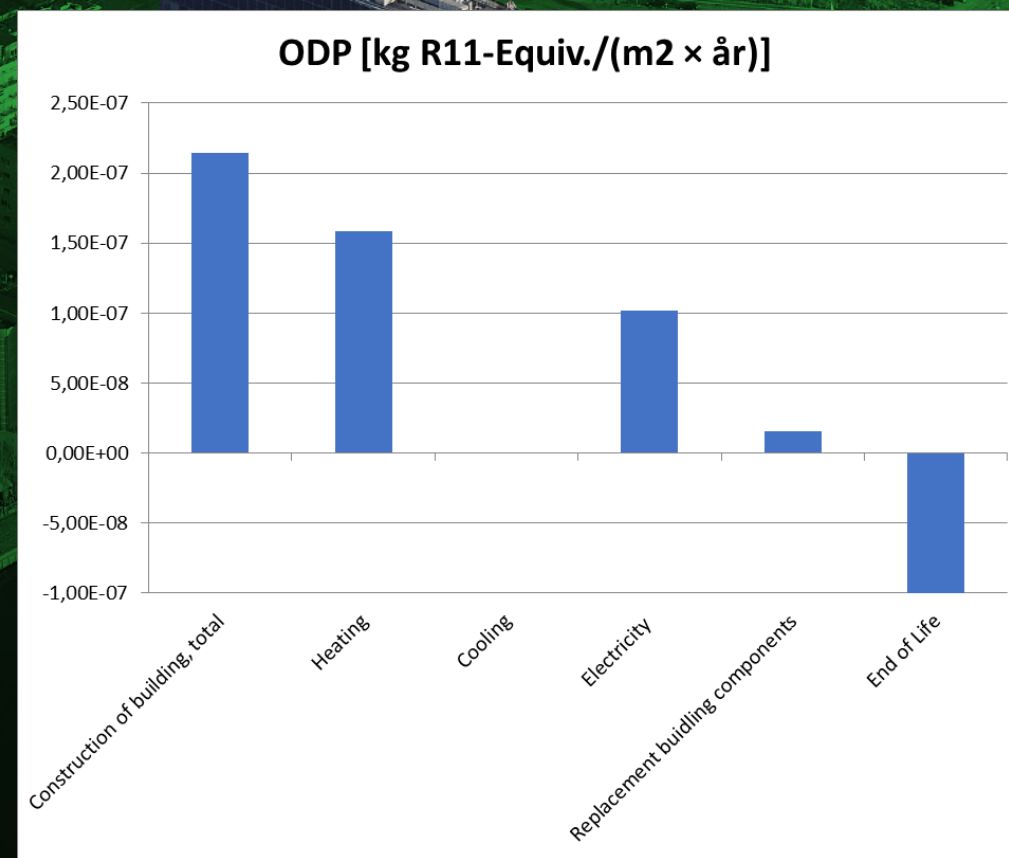
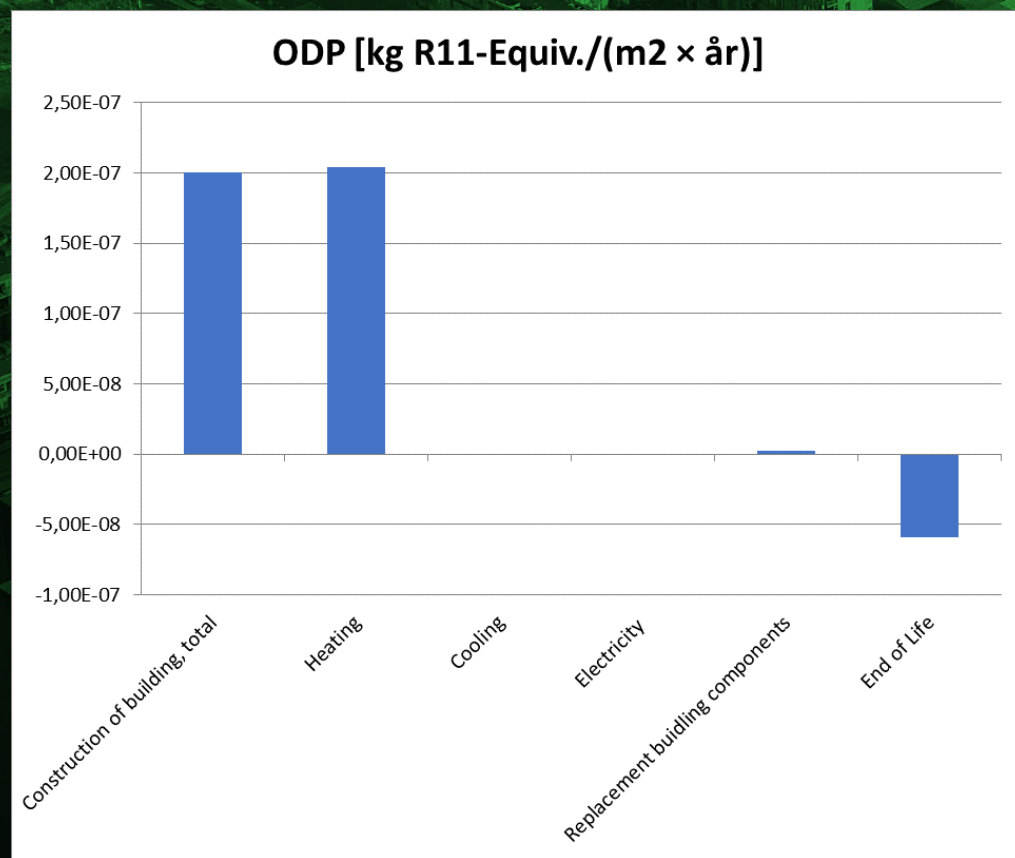
LCA – results – Ozone depletion potentiel

Residential, 2 floors

Standard concrete loadbearing structures

Residential 2 floors

Wood construction, TLC



An aerial photograph of a city waterfront, likely Copenhagen, showing a long pier with several buildings. One building is highlighted in a bright red color. The water is dark, and there are other buildings and structures in the background. The overall image has a dark, monochromatic green tint.

Questions?



GREEN
BUILDING
COUNCIL
DENMARK™

Gør Danmark bæredygtigere

